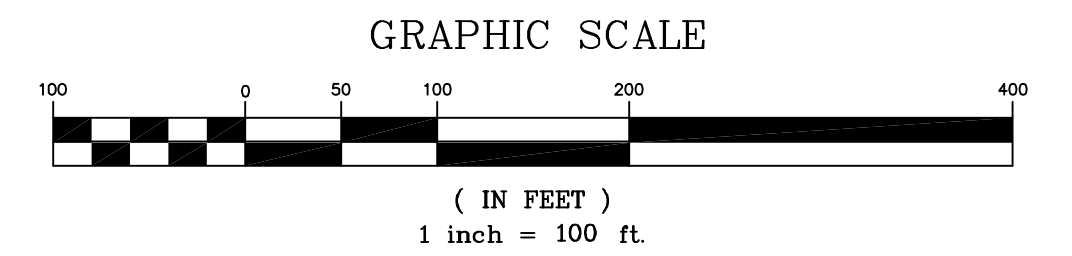
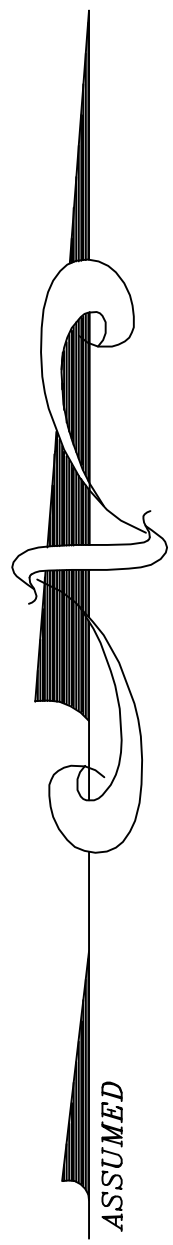
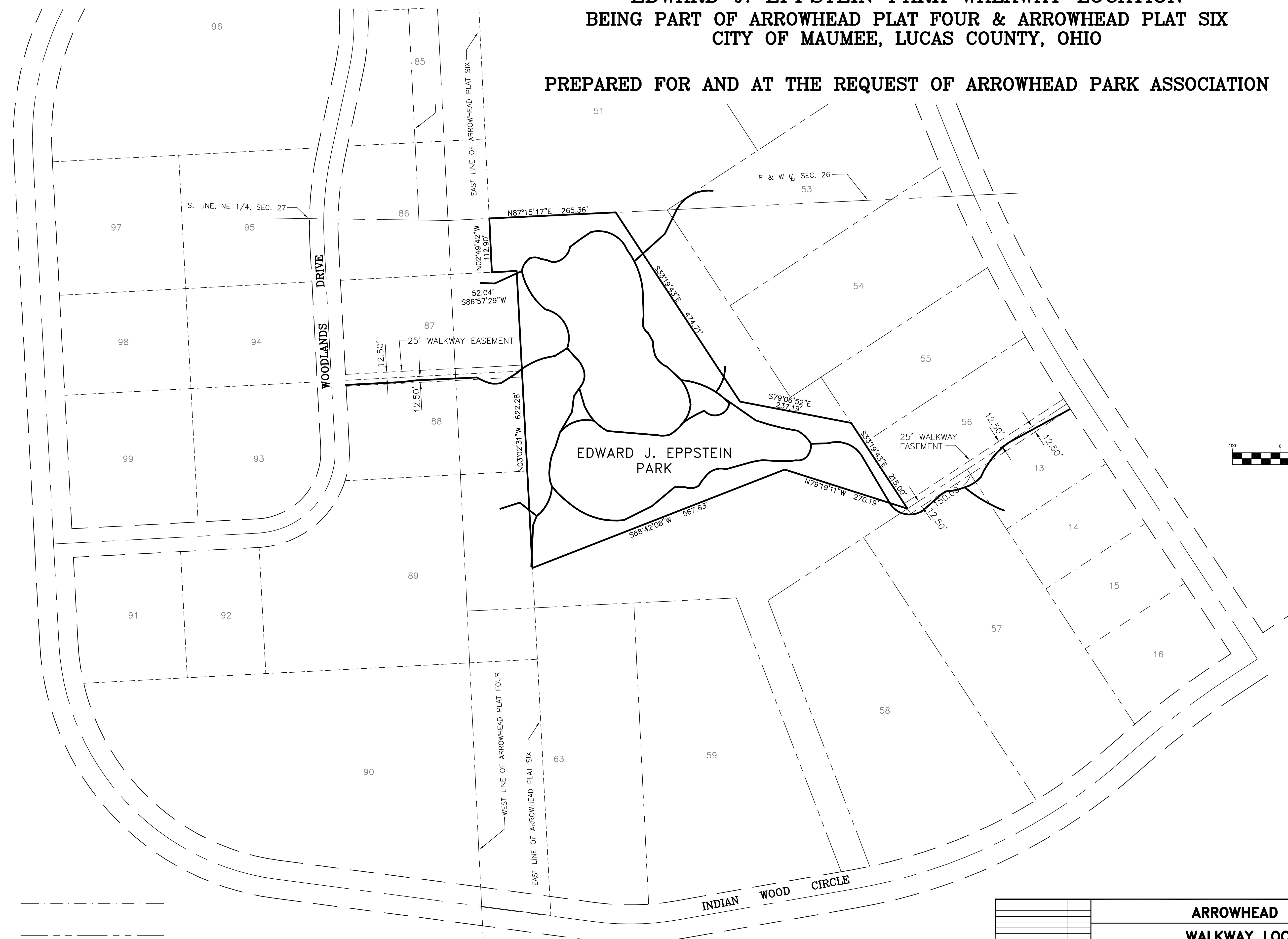


**ARROWHEAD PARK
EDWARD J. EPPSTEIN PARK WALKWAY LOCATION
BEING PART OF ARROWHEAD PLAT FOUR & ARROWHEAD PLAT SIX
CITY OF MAUMEE, LUCAS COUNTY, OHIO**

PREPARED FOR AND AT THE REQUEST OF ARROWHEAD PARK ASSOCIATION



ARROWHEAD PLAT TWO _____
 ARROWHEAD PLAT FOUR _____
 ARROWHEAD PLAT SIX _____

		ARROWHEAD PARK WALKWAY LOCATION	SCALE: 1"=100'
			DATE: 2/11/98
			DRAWN BY: JOHNSON
			CHK'D BY: FELLER
			PROJECT: 95-1736
			DRAWING: ARROWHEAD
			SHEET 1 OF 1
REVISION	DATE	Feller Finch & Associates, Inc. Engineers - Surveyors 1683 Woodlands Drive P.O. Box 68 Maumee, Ohio 43537-0068 Phone: (419)893-3680 Fax: (419)893-2982	